

<eaSI 생성>

The image shows a screenshot of the Hapag-Lloyd website. At the top left, there is a red circle with the number '1'. The Hapag-Lloyd logo is in the top left corner. The top navigation bar includes links for Home, Contact, Career, Press, Investor Relations, and EN. A 'Login' button is highlighted with a red box and a black callout bubble containing the Korean text '로그인'. Below the navigation bar, there are several menu items: Products, Services & Trades, Offices & Local Info, News & Insights, About us, and Online Business. A search bar is also present. The main content area features a large image of a Hapag-Lloyd container ship at sea, with the slogan 'Your cargo – our passion' overlaid at the bottom. On the right side, there are several utility sections: 'Container' with a search field, 'Import' with a search field, 'Find Schedule' with input fields for 'From', 'To', 'Departs' (set to 08/13/2018), and 'For' (set to 4 weeks), and 'Quicklinks' with links for 'My Shipments' and 'webVGM'.



## Tariffs

- General Information
- Essential Terms
- Rules
- Tariffs Records
- Ocean Tariff
- Inland Tariff
- Rate of Exchange
- Local Charges / Service Fees
- Detention & Demurrage



## Schedules

- Interactive Schedule
- Download
- Vessel Tracing
- via Fax / E-Mail
- Subscription



## Fleet & Offices

- Offices & Local Info
- Hapag-Lloyd Vessels
- Overview Containers



## Shipments

- New Booking Request
- List of Booking Requests
- Booking Template List
- My Shipments
- webVGM
- VGM Excel Template



## Tracing

- by Container
- by Booking
- Enhanced Search
- Tracing via E-mail: GetInfo
- Vessel Tracing



## Documents

- [Electronic-advanced Shipping Instructions: eaSI online](#)
- Electronic-Advanced Shipping Instructions: eaSI mail
- Sea Waybill Download
- Sea Waybill Terms & Conditions

Online Business → Documents → Electronic-advanced Shipping Instructions: eaSI online 선택



# Electronic-Advanced Shipping Instructions: eaSI online



HIDE

Search for a specific booking by inserting a booking number or list all your relevant bookings directly by simply pressing FIND.

The successful processing of the documents requires **Adobe Reader version 7.0.9 or above.**

Booking No.

Find

Clear

HIDE



해당 부킹번호 체크

	Document Closure	Vessels	Port of Discharge, End of Transport	No. of Shipping Instructions (received at Hapag-Lloyd)	No. of Drafts
<input checked="" type="radio"/>	2018-08-26	2018-08-21	UMM QARN HAMBURG	0	0

Download New Form

Shipping Instruction Details

Shipment Details

webVGM

4

**\*빨간 필드**

- 필수 필드로 값이 꼭 들어가야 함.
- 공란으로 제출하면 에러 발생!



Name: \_\_\_\_\_

Create a New B/L Instruction

No.: \_\_\_\_\_ Page: 1 / 2

20280938 create New

Shipper's Export Reference: \_\_\_\_\_

Forwarding Agent Address: \_\_\_\_\_

Consignee:  To Order

Notify Address: \_\_\_\_\_ Add more

Consignee's Reference: \_\_\_\_\_

Place of Receipt: \_\_\_\_\_

Vessel(s): DALIAN EXPRESS

Voyage No.: \_\_\_\_\_

EMIRATES GANGES

Port of Loading: BUSAN

Port of Discharge: NHAVA SHEVA

**\* Freight Payable At :**

- > Origin = Freight Prepaid (All Prepaid 설정됨)
- > Destination = Freight Collect (All Collect 설정됨)
- > Elsewhere = Elsewhere Payment (제 3 국 운임지불)

Please find all

Movement Type: FCL/FCL Total Number: 1

AMS/ACI Self-File:

Freight Payable At: \_\_\_\_\_ Invoice Reference: \_\_\_\_\_

Set Charges to:

All Prepaid  All Collect  individually

Origin Port Charge  Prepaid  Collect

Sea Freight + Additional  Prepaid  Collect

Destination Port Charge  Prepaid  Collect

Destination Haulage Charges  Prepaid  Collect

Document Type: Sea Waybill

Number of Freight: \_\_\_\_\_

Number of Unfreighted: \_\_\_\_\_

Original Bs/L: \_\_\_\_\_ No. of Copies: \_\_\_\_\_

Send me the Sea Waybill of Lading \_\_\_\_\_ (may only use Post / Self-Collector):

E-Mail  Post

Download


Remarks (for Information only to HLAG i.e. will NOT be shown) \_\_\_\_\_ Add more

All Prepaid / All Collect 가 아닐 경우 반드시 Individually 를 선택하여 항목별로 Prepaid / Collect 지정

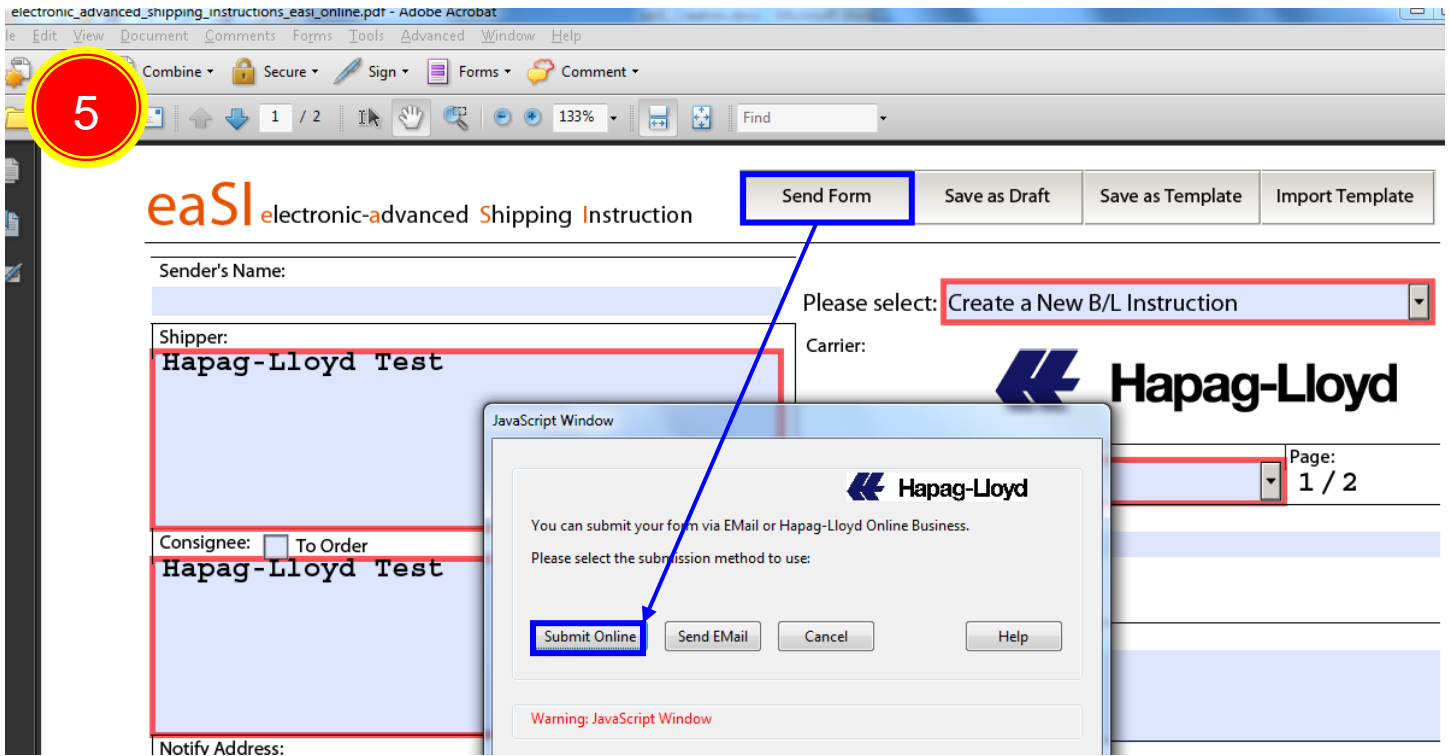
면장번호입력

Container Nos., Seal Nos., Marks and Nos.	Number and Kind of Packages, Description of Goods:	Gross Cargo Weight, Measurement:	Actions: Container / Cargo
Container Nos. HLXU 2246417	Number of Packages	Gross Cargo Weight Unit	Container copy
Cargo Item No. (index) 1	Kind of Packages   UN Packing Code Print the Kind of Packages on B/L as	Net Cargo Weight Unit KGM	add
Marks and Nos. 쉬핑마크입력	Description of Goods	Measurement Unit CBM = MTQ	remove
Seal No. 1 AHL4179249		HS Code	remove all
Seal No. 2			Cargo copy
Seal No. 3			add
			remove

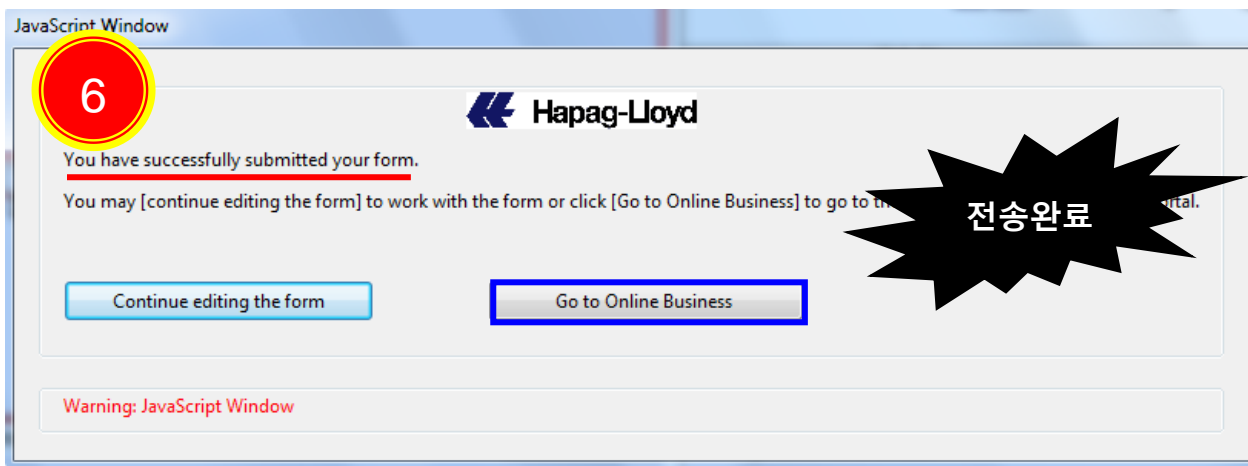
\*HS Code  
2 자리씩 총 6 자리 숫자  
필수입력

 Please use the Description of Goods for any additional HS Codes

- 모든 작성을 마치셨으면,



(\* 5~10 초 정도 기다리세요)



수고하셨습니다. ☺

- Tip 1 ) Shipping Instruction Details 에서 eaSI 전송 상황 확인 가능

**Hapag-Lloyd** eng deu esp 中文 [home](#) [help](#) [sitemap](#) [contact](#)

Company Business

[About us](#) [Press](#) [IR](#) [Career](#) [Fleet](#) [Products & Services](#) [Offices](#) [Local Info](#) [News](#) [Online Business](#)

[Overview](#) [My Shipments](#) [Tariffs](#) [Rate of Exchange](#) [Schedules](#) [Tracing](#) [Documents](#) [Import](#) [User Guide](#) [My Account](#) [Logout](#)

[Shipping Instructions: eaSI online](#) [eaSI Templates](#) [eaSI mail](#) [Sea Waybill Download](#) [Sea Waybill Terms & Conditions](#) [Invoice Download](#)

## Electronic-Advanced Shipping Instructions: eaSI online ?

Search for a specific booking by inserting a booking number or list all your relevant bookings directly by simply pressing FIND.

The successful processing of the documents requires [Adobe Reader version 7.0.9 or above](#).

Booking No.

?

	Booking No.	Customer Reference	Vessel Departure	Document Closure	Vessels	Port of Discharge, End of Transport	No. of Shipping Instructions (received at Hapag-Lloyd)	No. of Drafts
<input type="radio"/>	28946237		2012-08-03	2012-07-31	DALIAN EXPRESS, EMIRATES GANGES	NHAVA SHEVA	6	1
<input type="radio"/>	20280938		2012-08-03	2012-07-31	DALIAN EXPRESS, EMIRATES GANGES	NHAVA SHEVA, AHMEDABAD	1	0
<input checked="" type="radio"/>	25279492		2012-08-11	2012-08-07	ZIM NINGBO, VALERIE SCHULTE	NHAVA SHEVA	0	3
<input type="radio"/>	27279163		2012-08-26	2012-08-21	BERLIN EXPRESS	NHAVA SHEVA	0	0

## Shipping Instruction Details ?



Booking No. 20280938  
Customer Reference

Shipment Details

Download New Form

- B/L 넘버
- 보낸 시간

Find here your Shipping Instructions received by Hapag-Lloyd.



	SI Status	Bill of Lading No.	Received by Hapag-Lloyd	Submission Channel	Submitted by
<input type="radio"/>	create B/L	HLCUSEL120801862	2012-08-01	eaSI online	ASDSD, SSA

Open Submitted Shipping Instruction



- Tip 2) 빨간 필드가 안 보일 때 -> '필드 강조' 표시 체크 (Highlight fields)

http://www.hapag-lloyd.com/en/documents/electronic\_advanced\_shipping\_instructions\_easi\_online.h - Windows Internet Explorer

다음 양식을 작성하십시오. 입력한 데이터를 이 양식에 저장할 수 있습니다.

**eaSI** electronic-advanced Shipping Instruction

Send Form Save as Draft Save as Template Import Template

Sender's Name:

Shipper:

Carrier: **Hapag-Lloyd**

Shipment No.: 20280938 B/L No.: create New Page: 1 / 2

Shipper's Export Reference:

Forwarding Agent Address:

Notify Address: Add more

Consignee's Reference:

Place of Receipt:

Vessel(s): DALIAN EXPRESS Voyage No.: 72W29  
EMIRATES GANGES 01231W

Port of Loading: BUSAN

Port of Discharge:

Place of Delivery: AHMEDABAD

기존 필드 강조

http://www.hapag-lloyd.com/en/documents/electronic\_advanced\_shipping\_instructions\_easi\_online.h - Windows Internet Explorer

다음 양식을 작성하십시오. 입력한 데이터를 이 양식에 저장할 수 있습니다.

**eaSI** electronic-advanced Shipping Instruction

Send Form Save as Draft Save as Template Import Template

Sender's Name:

Shipper:

Carrier: **Hapag-Lloyd**

Shipment No.: 20280938 B/L No.: create New Page: 1 / 2

Shipper's Export Reference:

Forwarding Agent Address:

Notify Address: Add more

Consignee's Reference:

Place of Receipt:

Vessel(s): DALIAN EXPRESS Voyage No.: 72W29  
EMIRATES GANGES 01231W

Place of Delivery: AHMEDABAD

기존 필드 강조

